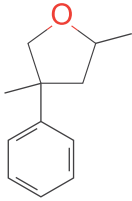


# RHUBOXALAN

## 900005

CAS NO: 82461-14-1  
EINECS NO: 279-967-8  
REACH NO: -  
GPC TURKEY REG NO: 05-0000373577-37-0000  
TARIFF NO: 29173700

2, 4-dimethyl-4-phenyloxolane



### OLFACTION PROFILE

Citrus grapefruit, green, rhubarb, herbal

### PERFUMERY USAGE

Performs well in grapefruit and other citrus compositions. Acts as a good modifier in herbal and aromatic blends.

### PACKAGING



Bottles



Cans



Drums

### PACK SIZE

1 Kg, 5 Kg, 10 Kg, 25 Kg,  
100 Kg, 200 Kg



RHUBARB



GREEN

### TENACITY

1 day



HALAL	YES
KOSHER	YES
USAGE LEVEL	0.05 % upto 2 %
APPEARANCE	Colorless to Pale Yellow Liquid
RELATIVE DENSITY	0.9897 - 1.0004
FLASH POINT	≥ 106°C (222.8°F)
MOLECULAR WEIGHT	176
BOILING POINT	248.0 - 249.0°C @ 760.0 mm Hg
ASSAY	≥ 95 (Isomer sum)
Available Concentrations	Neat - 900005